



**1 Westmoor Road, Enfield Highway
Offers In Excess Of £425,000 Freehold**



1 Westmoor Road, Enfield Highway

186 Hertford Road, Enfield Highway,
Middlesex, EN3 5AZ

020 8805 5959
www.kings-group.net

- Three Bedroom End of Terraced House
- Two Reception Rooms
- Front & Rear Gardens
- Large Rear Gardens
- Potential for Development Subject to Planning Consent
- First Floor Bathroom
- Close Proximity to all local Shops & Amenities

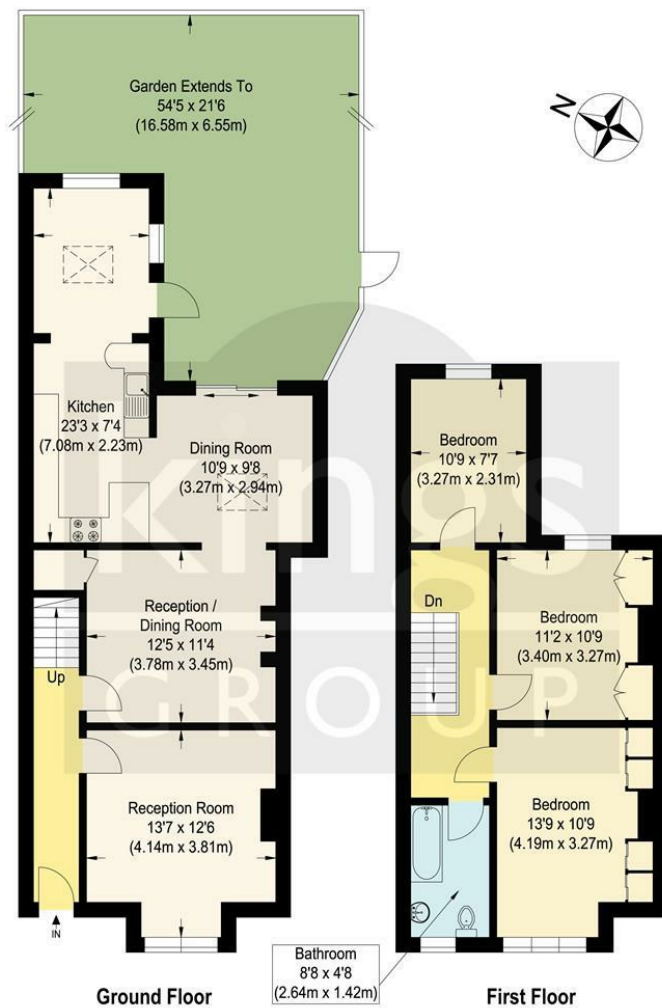
This property is not only an ideal family home with its spacious layout and convenient location but also a fantastic buy-to-let opportunity given its proximity to key transport links and local amenities. Don't miss out on the chance to make this wonderful house your new home or a valuable addition to your investment portfolio.

KINGS GROUP offer to the market this large and inviting three-bedroom end-of-terrace house, ideally located in Enfield Highway. This property is perfect for families seeking a comfortable and spacious home or for investors looking for a prime buy-to-let opportunity.

The house features two bright and airy reception rooms, providing ample space for both relaxation and entertaining guests. The modern fitted kitchen is well-appointed, leading to a separate dining room that is perfect for family meals and gatherings.

Upstairs, you will find three generously sized bedrooms, each offering plenty of space and natural light. The property also benefits from a large rear garden, ideal for outdoor activities, gardening.

Conveniently located, this home is just a short distance from local shops and amenities, ensuring all your daily needs are within easy reach. Additionally, Brimsdown Train Station is nearby, offering direct access to Tottenham Hale and London Liverpool Street.



Westmor Road

Approximate Gross Internal Floor Area : 106.50 sq m / 1146.35 sq ft
Illustration for identification purposes only, measurements are approximate, not to scale.



THE PROPERTY MISDESCRIPTIONS ACT 1991. The agent has not tested any apparatus, equipment, fixtures or services and so cannot verify that they are in working order, or fit for the purpose. References to the Tenure of a property are based on information supplied by the vendor. The agent has not had sight of the Title documents. A buyer is advised to obtain verification from their Solicitor or Surveyor



186 Hertford Road, Enfield Highway,
Middlesex, EN3 5AZ

020 8805 5959

www.kings-group.net



Zoopla.co.uk



rightmove.co.uk
The UK's number one property website

